

Windows 10 - 1809

Windows 10 Versions

Windows 10 current versions by servicing option

Version	Servicing option	Availability date	OS build	Latest revision date
1809	Semi-Annual Channel (Targeted)	10/2/2018	17763.1	10/2/2018
1803	Semi-Annual Channel	7/10/2018	17134.320	9/26/2018
1803	Semi-Annual Channel (Targeted)	4/30/2018	17134.320	9/26/2018
1709	Semi-Annual Channel	1/18/2018	16299.699	9/26/2018
1709	Semi-Annual Channel (Targeted)	10/17/2017	16299.699	9/26/2018
1703	Semi-Annual Channel	7/11/2017	15063.1356	9/20/2018
1703	Current Branch (CB)	4/11/2017	15063.1356	9/20/2018
1607	Current Branch for Business (CBB)	11/29/2016	14393.2515	9/20/2018
1607	Current Branch (CB)	8/2/2016	14393.2515	9/20/2018
1607	Long-Term Servicing Branch (LTSB)	8/2/2016	14393.2515	9/20/2018
1507 (RTM)	Long-Term Servicing Branch (LTSB)	7/29/2015	10240.17976	9/11/2018

Microsoft recommends

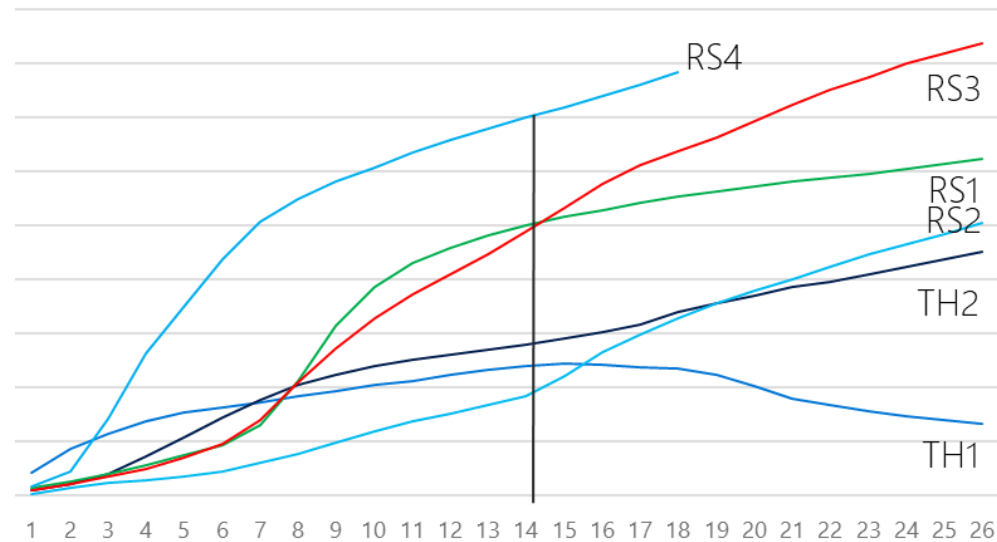
1803 Rollout Data

236M devices on RS4 in 45 days (@6/13)

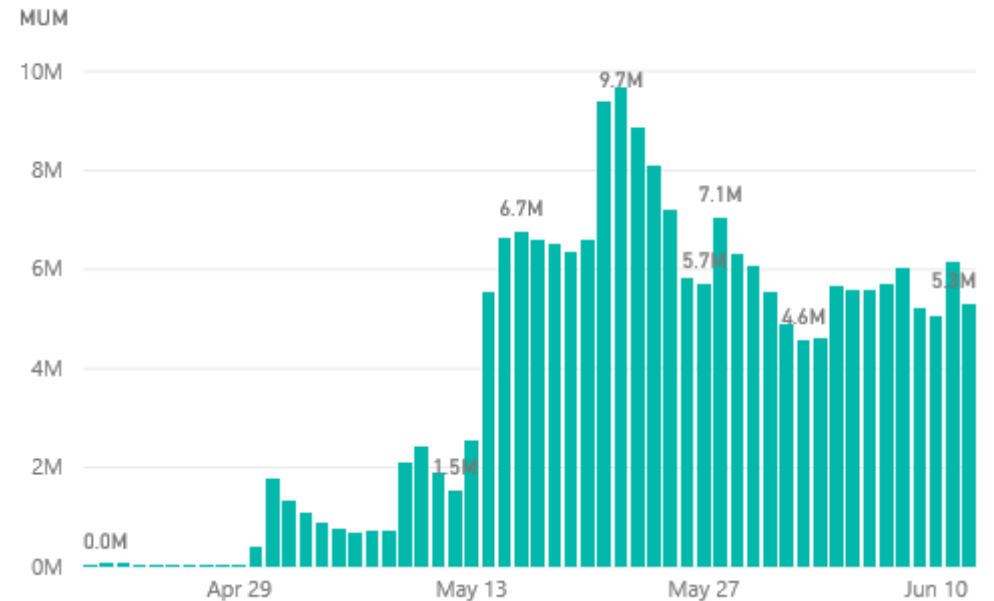
Same number in RS3 in 95 days

Inflection Point:
1803 is now the most widely installed version
of Windows 10

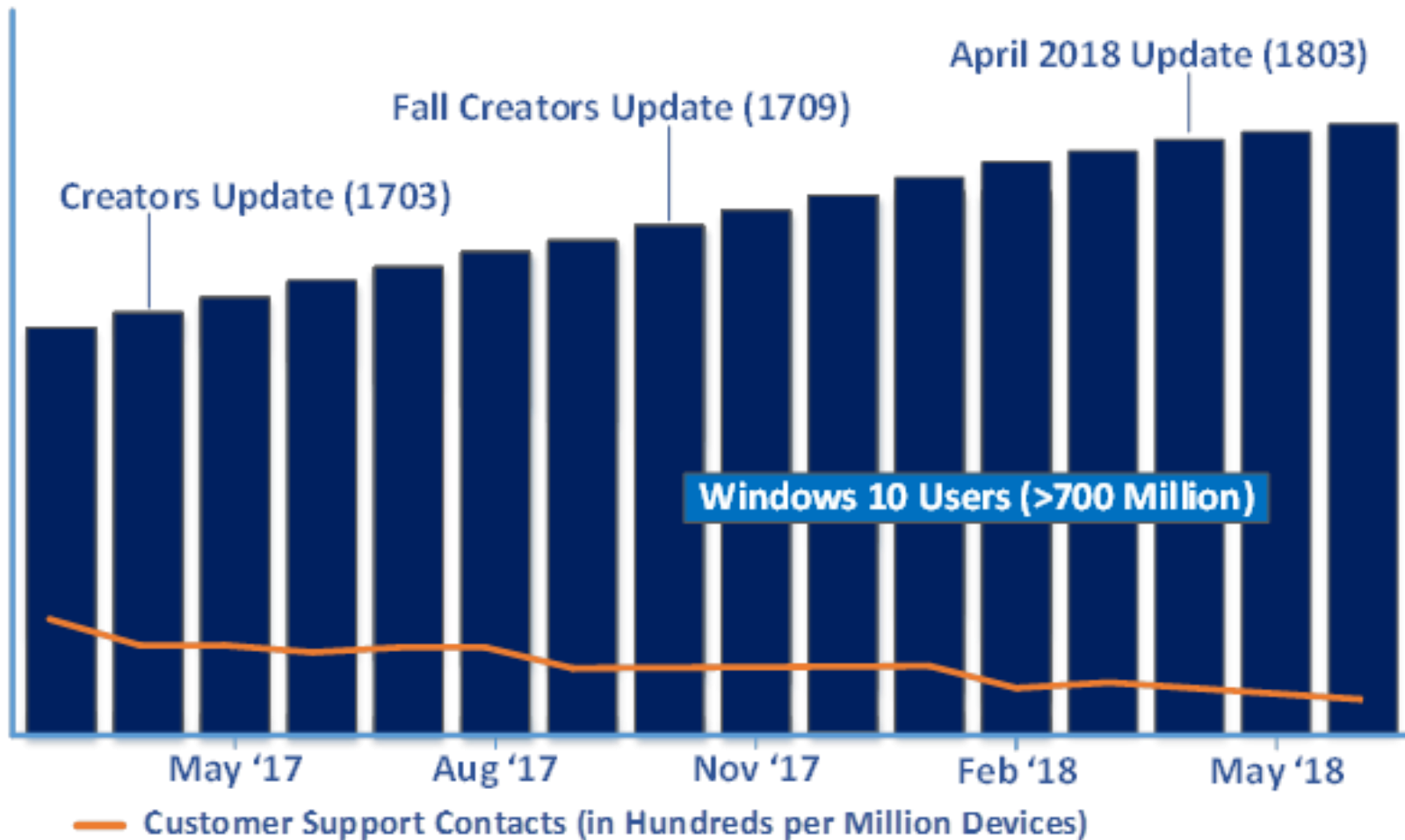
Daily Average is 5.6M



RS4 Daily Upgrade Counts



More Devices, Declining Call Volume



Continued accelerated rollout while reducing support call volumes and costs

Windows 10 gets Better with each Release

With enhanced security, more tools for IT and end user productivity features

1511

- Mobile Device Management
- AAD Join
- Windows Store for Business
- Windows Update for Business
- Mail, Calendar, Photos, Maps, Groove, Skype
- Windows Defender Antivirus
- Windows Hello
- Microsoft Edge
- Device Guard
- Credential Guard
- BitLocker
- SmartScreen
- Windows as a service
- In-place upgrades
- Continuum
- Cortana
- Windows 10 core

1607

- Windows Information Protection
- Windows Hello for Business
- Windows Analytics Upgrade Readiness
- App-V, UE-V
- Hybrid Azure Active Directory Join
- Windows Ink
- Mobile Device Management
- AAD Join
- Windows Store for Business
- Windows Update for Business
- Mail, Calendar, Photos, Maps, Groove, Skype
- Windows Defender Antivirus
- Windows Hello
- Microsoft Edge
- Device Guard
- Credential Guard
- BitLocker
- SmartScreen
- Windows as a service
- In-place upgrades
- Continuum
- Cortana
- Windows 10 core

1703

- Windows Autopilot
- Windows Defender ATP
- Windows Defender Security Center
- Express update delivery
- Hyper-V
- Windows 10 Subscription Activation
- Windows Insider Program for Business
- Paint 3D
- Cortana at work
- Night light, mini view
- Windows Information Protection
- Windows Hello for Business
- Windows Analytics Upgrade Readiness
- App-V, UE-V
- Hybrid Azure Active Directory Join
- Windows Ink
- Mobile Device Management
- AAD Join
- Windows Store for Business
- Windows Update for Business
- Mail, Calendar, Photos, Maps, Groove, Skype
- Windows Defender Antivirus
- Windows Hello
- Microsoft Edge
- Device Guard
- Credential Guard
- BitLocker
- SmartScreen
- Windows as a service
- In-place upgrades
- Continuum
- Cortana
- Windows 10 core

1709

- Windows Defender Exploit Guard, System Guard, Application Guard, Application Control
- Mobile Device Management
- Windows Analytics Update Compliance
- Windows Analytics Device Health
- Co-management
- Enterprise search in Windows
- Continue on PC
- OneDrive Files On-Demand
- Narrator
- Mixed Reality Viewer
- Windows Autopilot
- Windows Defender ATP
- Windows Defender Security Center
- Express update delivery
- Hyper-V
- Windows 10 Subscription Activation
- Windows Insider Program for Business
- Paint 3D
- Cortana at work
- Night light, mini view
- Windows Information Protection
- Windows Hello for Business
- Windows Analytics Upgrade Readiness
- App-V, UE-V
- Hybrid Azure Active Directory Join
- Windows Ink
- Mobile Device Management
- AAD Join
- Windows Store for Business
- Windows Update for Business
- Mail, Calendar, Photos, Maps, Groove, Skype
- Windows Defender Antivirus
- Windows Hello
- Microsoft Edge
- Device Guard
- Credential Guard
- BitLocker
- SmartScreen
- Windows as a service
- In-place upgrades
- Continuum
- Cortana
- Windows 10 core

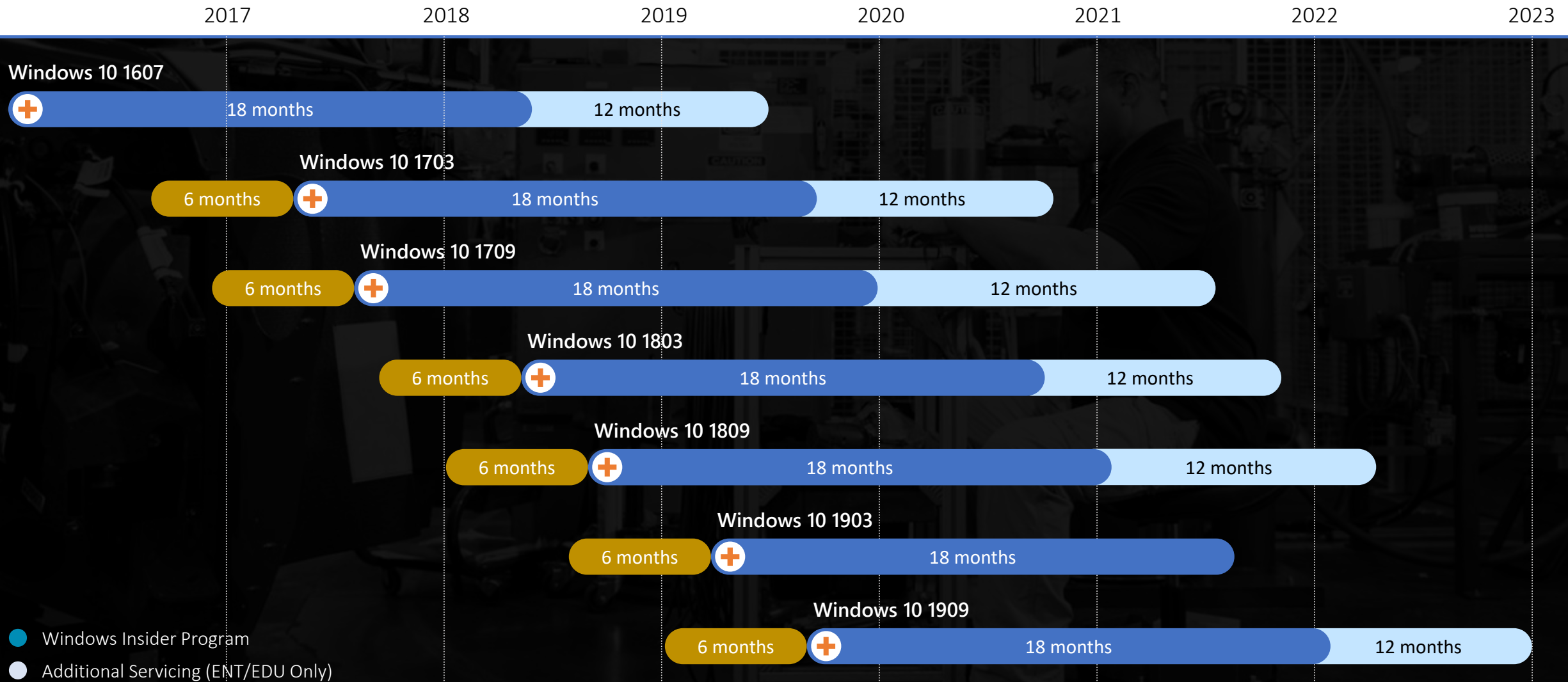
1803

- Windows Analytics – Spectre & Meltdown, Delivery Optimization, Application Reliability
- Logon Health
- WDATP Automated Remediation
- Conditional Access based on WDATP device risk
- Threat Analytics
- Emergency Outbreak Updates
- Advanced hunting
- Cloud Credential Guard
- Diagnostic data viewer
- Windows Autopilot enrollment status page
- Windows 10 Enterprise in S mode
- Shared Windows Devices
- Nearby Sharing
- Dictation
- Timeline
- Windows Defender Exploit Guard, System Guard, Application Guard, Application Control
- Mobile Device Management
- Windows Analytics Update Compliance
- Windows Analytics Device Health
- Co-management
- Enterprise search in Windows
- Continue on PC
- OneDrive Files On-Demand
- Narrator
- Mixed Reality Viewer
- Windows Autopilot
- Windows Defender ATP
- Windows Defender Security Center
- Express update delivery
- Hyper-V
- Windows 10 Subscription Activation
- Windows Insider Program for Business
- Paint 3D
- Cortana at work
- Night light, mini view
- Windows Information Protection
- Windows Hello for Business
- Windows Analytics Upgrade Readiness
- App-V, UE-V
- Hybrid Azure Active Directory Join
- Windows Ink
- Mobile Device Management
- AAD Join
- Windows Store for Business
- Windows Update for Business
- Mail, Calendar, Photos, Maps, Groove, Skype
- Windows Defender Antivirus
- Windows Hello
- Microsoft Edge
- Device Guard
- Credential Guard
- BitLocker
- SmartScreen
- Windows as a service
- In-place upgrades
- Continuum
- Cortana
- Windows 10 core

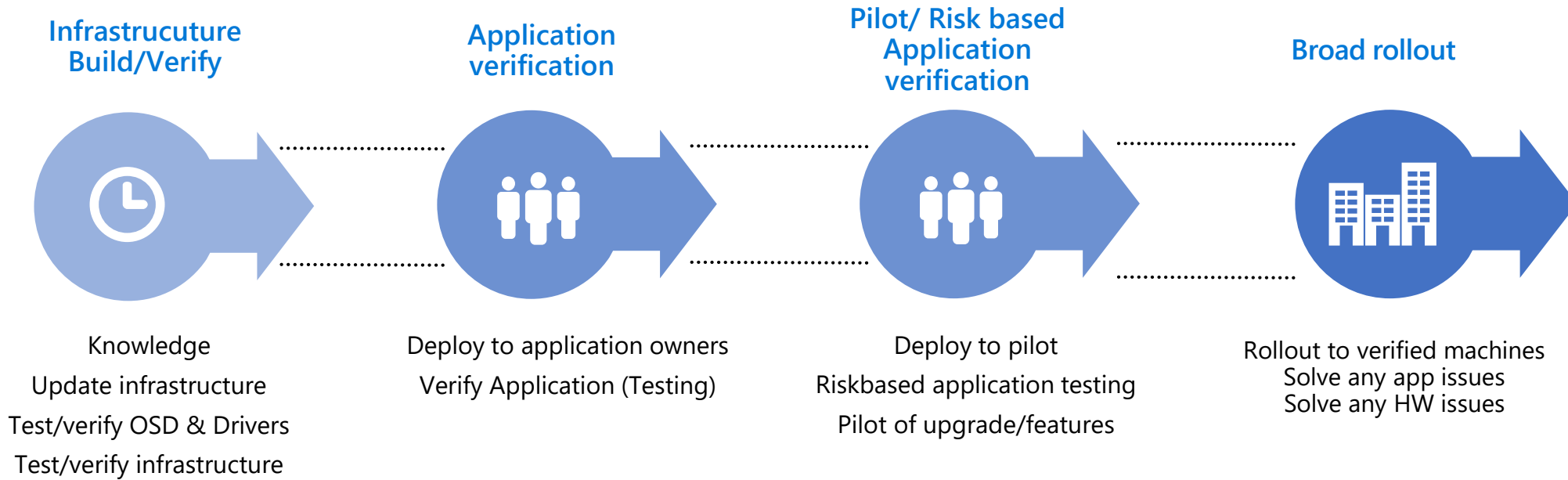
1809

- Windows Defender ATP new attack surface area reduction controls
- Investigation and remediation across Office 365
- ATP and Windows Defender ATP
- Web Authentication in Microsoft Edge
- Windows Hello with FIDO 2.0
- 30 months of support for September releases
- Windows Autopilot Self-deploying mode
- Windows Autopilot Hybrid Azure AD join
- S Mode Block Switch
- Microsoft Edge kiosk mode
- Desktop Analytics (Preview) – Intelligent Pilot Selection and ConfigMgr Integration
- ReadyforMicrosoft365.com
- Microsoft Edge experience improvements
- Accessibility enhancements
- Access the clipboard across devices
- Your Phone
- Windows Analytics – Spectre & Meltdown, Delivery Optimization, Application Reliability
- Logon Health
- WDATP Automated Remediation
- Conditional Access based on WDATP device risk
- Threat Analytics
- Emergency Outbreak Updates
- Advanced hunting
- Cloud Credential Guard
- Diagnostic data viewer
- Windows Autopilot enrollment status page
- Windows 10 Enterprise in S mode
- Shared Windows Devices
- Nearby Sharing
- Dictation
- Timeline
- Windows Defender Exploit Guard, System Guard, Application Guard, Application Control
- Mobile Device Management
- Windows Analytics Update Compliance
- Windows Analytics Device Health
- Co-management
- Enterprise search in Windows
- Continue on PC
- OneDrive Files On-Demand
- Narrator
- Mixed Reality Viewer
- Windows Autopilot
- Windows Defender ATP
- Windows Defender Security Center
- Express update delivery
- Hyper-V
- Windows 10 Subscription Activation
- Windows Insider Program for Business
- Paint 3D
- Cortana at work
- Night light, mini view
- Windows Information Protection
- Windows Hello for Business
- Windows Analytics Upgrade Readiness
- App-V, UE-V
- Hybrid Azure Active Directory Join
- Windows Ink
- Mobile Device Management
- AAD Join
- Windows Store for Business
- Windows Update for Business
- Mail, Calendar, Photos, Maps, Groove, Skype
- Windows Defender Antivirus
- Windows Hello
- Microsoft Edge
- Device Guard
- Credential Guard
- BitLocker
- SmartScreen
- Windows as a service
- In-place upgrades
- Continuum
- Cortana
- Windows 10 core

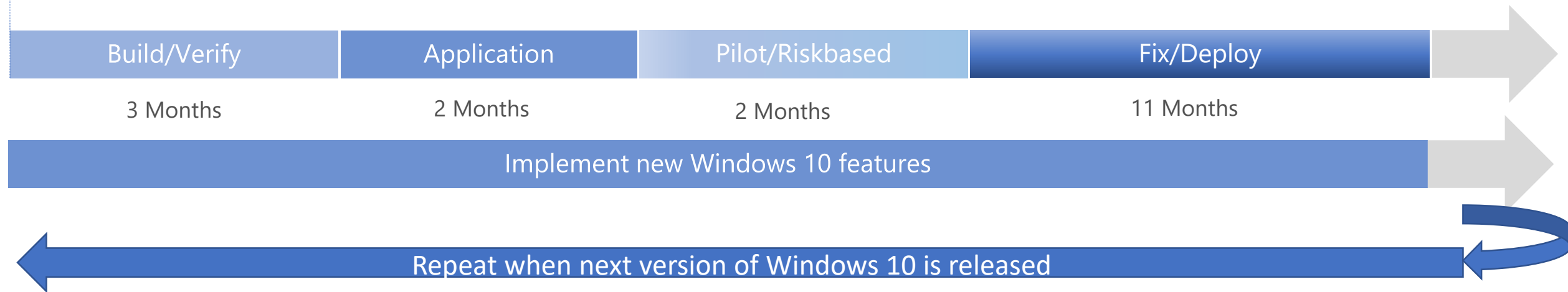
W10 Servicing Timeline (Semi-Annual Channel)



Windows as a service process



Windows 10
xxx is released

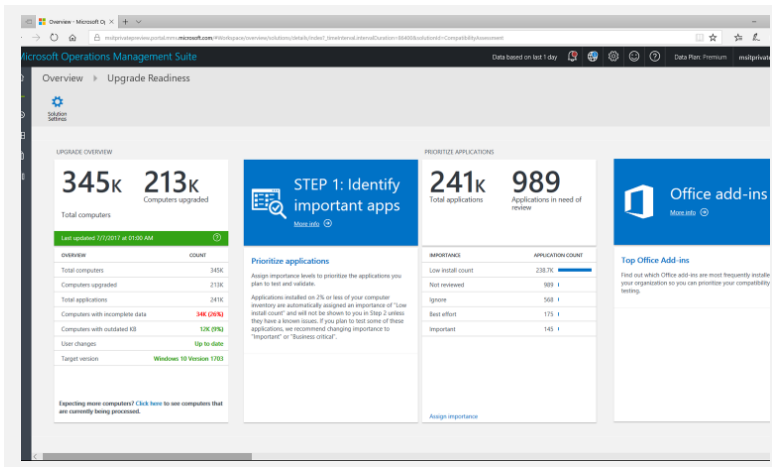


Windows Analytics

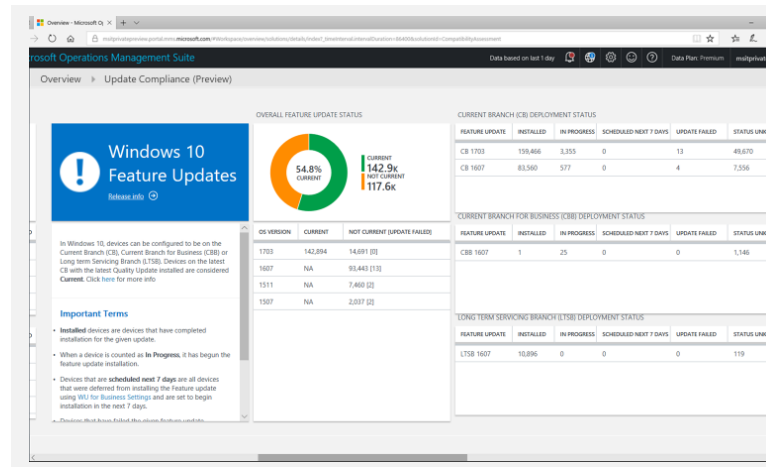
A suite of tools to reduce deployment and support costs



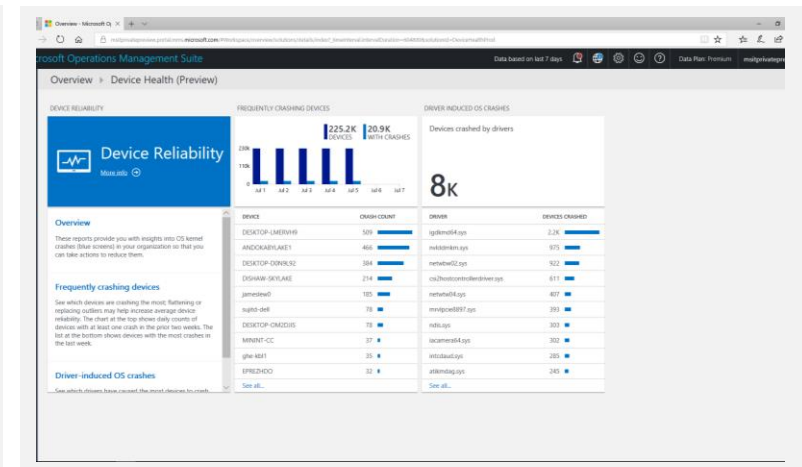
Upgrade Readiness



Update Compliance



Device Health*



Plan upgrades by identifying devices that are ready and identify and resolve top app/driver compatibility blockers

Ensure update and antimalware compliance with timely reports for all your devices (even those on the road)

Reduce support costs by proactively identifying and remediating top end-user impacting issues

*Only available with Windows 10 Enterprise edition

Pre-Upgrade

Post-Upgrade

Windows 10 – 1809 – Edge i Kioskläge

- Edge konfigureras via GPO till kiosk läge + Autoinloggning
- Kiosk konfigureras via Powershell eller MDM

 Configure Home Button	Enabled	No
 Configure kiosk mode	Enabled	No
 Configure kiosk reset after idle timeout	Enabled	No

SetupKiosk - Copy.ps1* X

```
1 $usrname = 'Kiosk'
2 $PlainPassword = "Kiosk0!"
3 $SecurePassword = $PlainPassword | ConvertTo-SecureString -AsPlainText -Force
4 New-LocalUser -Name Kiosk -Password $SecurePassword -PasswordNeverExpires -UserMayNotChangePassword
5 Set-AssignedAccess -AppUserModelId Microsoft.MicrosoftEdge_8wekyb3d8bbwe!MicrosoftEdge -UserName $usrname
6
7 |
```

Edge i Kioskläge med domän konto

- Går endast via MDM och MDM/WMI Bridge
- Powershell script + GPO för Autoinloggning

```
Kiosk.ps1 X
1 $namespaceName="root\cimv2\mdm\dmmap"
2 $className="MDM_AssignedAccess"
3 $obj = Get-CimInstance -Namespace $namespaceName -ClassName $className
4 $obj.Configuration = @"
5 <?xml version="1.0" encoding="utf-8" ?>
6 <AssignedAccessConfiguration
7   xmlns="http://schemas.microsoft.com/AssignedAccess/2017/config"
8   xmlns:rs5="http://schemas.microsoft.com/AssignedAccess/201810/config"
9   >
10  <Profiles>
11    <Profile Id="{AFF9DA33-AE89-4039-B646-3A5706E92957}">
12      <KioskModeApp AppUserModelId="Microsoft.MicrosoftEdge_8wekyb3d8bbwe!MicrosoftEdge"/>
13    </Profile>
14  </Profiles>
15  <Configs>
16    <Config>
17      <Account>eklient\user1</Account>
18      <DefaultProfile Id="{AFF9DA33-AE89-4039-B646-3A5706E92957}">
19    </Config>
20  </Configs>
21 </AssignedAccessConfiguration>
22 "@
23
24 Set-CimInstance -CimInstance $obj
```

Windows Defender - Sandlåda



Omstart
bprocess

Windows Defender – Testresults



AV-TEST: Perfect protection score of 6.0/6.0 in the latest test

The AV-TEST Product Review and Certification Report tests on three categories: protection, performance, and usability. The scores listed below are for the Protection category which has two scores: Real-World Testing and the AV-TEST reference set (known as "Prevalent Malware").

July-August 2018 AV-TEST Business User test: [Protection score 6.0/6.0](#) | [Analysis](#) ^{Latest}

Windows Defender Antivirus achieved an overall Protection score of 6.0/6.0, detecting 100% of 20,022 malware samples. With the latest results, Windows Defender Antivirus has achieved 100% on 14 of the 16 most recent antivirus tests (combined "Real-World" and "Prevalent malware").

May-June 2018 AV-TEST Business User test: [Protection score 6.0/6.0](#) | [Analysis](#)

Windows Defender Antivirus achieved an overall Protection score of 6.0/6.0, detecting 100% of 5,790 malware samples.

March-April 2018 AV-TEST Business User test: [Protection score 5.5/6.0](#) | [Analysis](#)

Windows Defender Antivirus achieved an overall Protection score of 5.5/6.0, missing 2 out of 5,680 malware samples (0.035% miss rate).

January-February 2018 AV-TEST Business User test: [Protection score 6.0/6.0](#) | [Analysis](#)

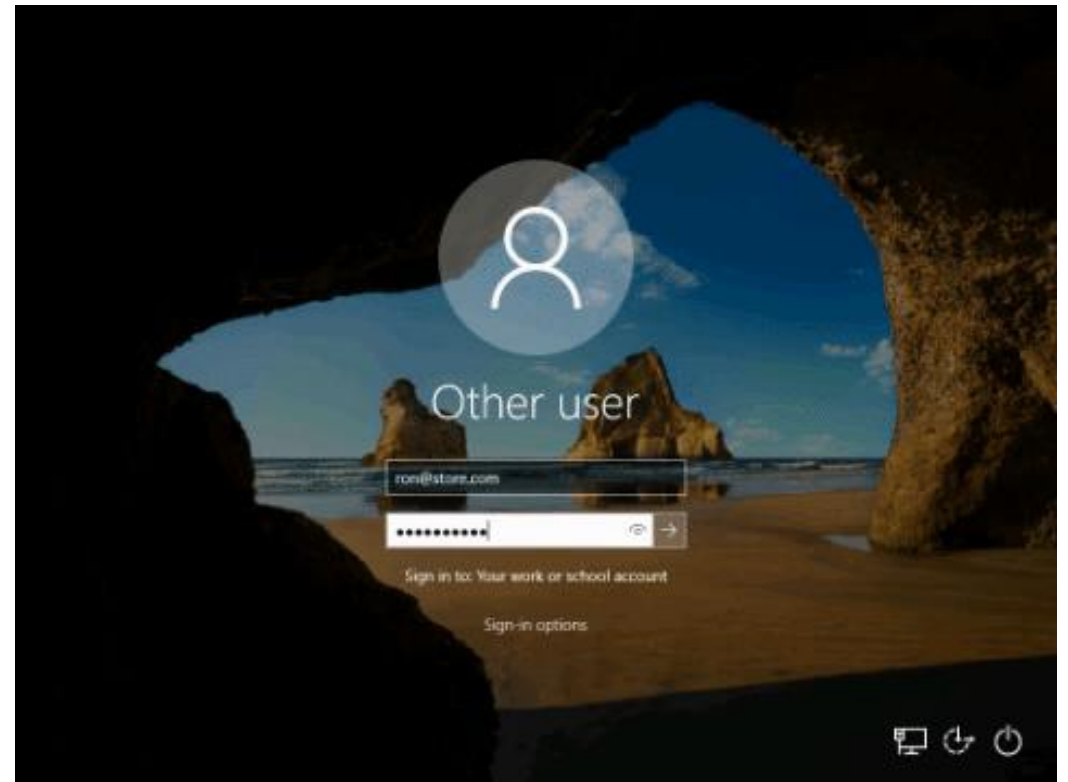
Windows Defender Antivirus achieved an overall Protection score of 6.0/6.0, with 5,105 malware samples tested.

Print och Scan drivrutiner flyttade till WU

- Inbox printer och Scan drivrutiner är flyttade till WU
- “Starting with Windows 10, version 1809, Windows has added support for Mopria-compatible Wi-Fi printers. When a driver is not available, Windows can install these printers without you needing to install any additional software or drivers,

Shared PC sign-in

- Snabbare än innan
- Gemensamma PC
- Enkelt att styra mängden profiler



WDATP

