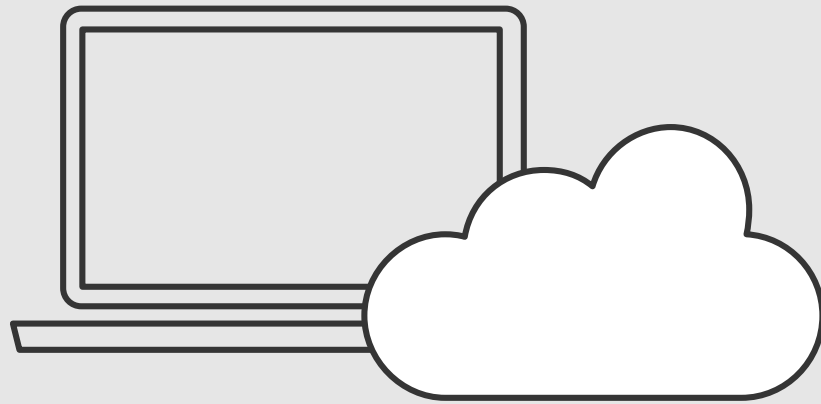


Windows 10 Lifecycle with Autopilot and Intune

Stefan Schörling
Lumagate part of Innofactor

Today's focus

Microsoft 365 powered devices



What is Microsoft 365?

"A complete, intelligent, secure solution to empower employees"

• Office 365



Unlocks
creativity

Windows 10



Built for
teamwork

Enterprise Mobility +
Security



Integrated
for simplicity

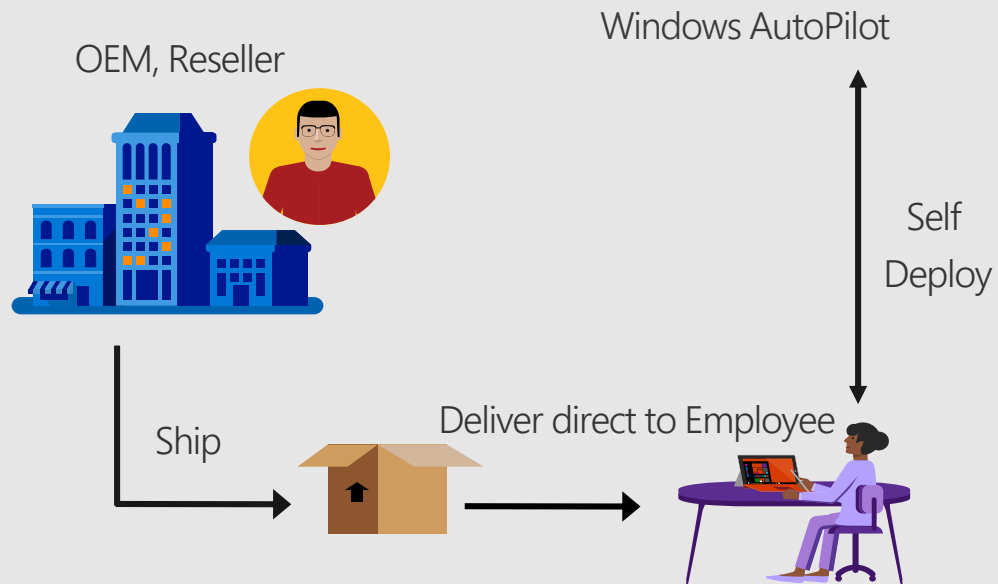


Intelligent
security

What is Autopilot

- It is a process – not a product
- It is a way to get a device under Modern Management
- It is a way to deliver devices directly to the end user without imaging

Deployment with windows autopilot



- See it as Microsoft's version of Apple DEP program
- Device ID needs to be pre-enrolled (unknown computer scenario doesn't work)
- Joins Azure AD, Intune registration, deploys packages etc. automatically

What is Autopilot NOT

- It is not a deployment tool!
- It is not a replacement for ConfigMgr!

Autopilot Requirements (1/2)

- Devices must be registered to the Organization
- Company Branding Configured
- Network Connectivity to the cloud
- Devices with Win 10 Pro, Ent or Education 1703+

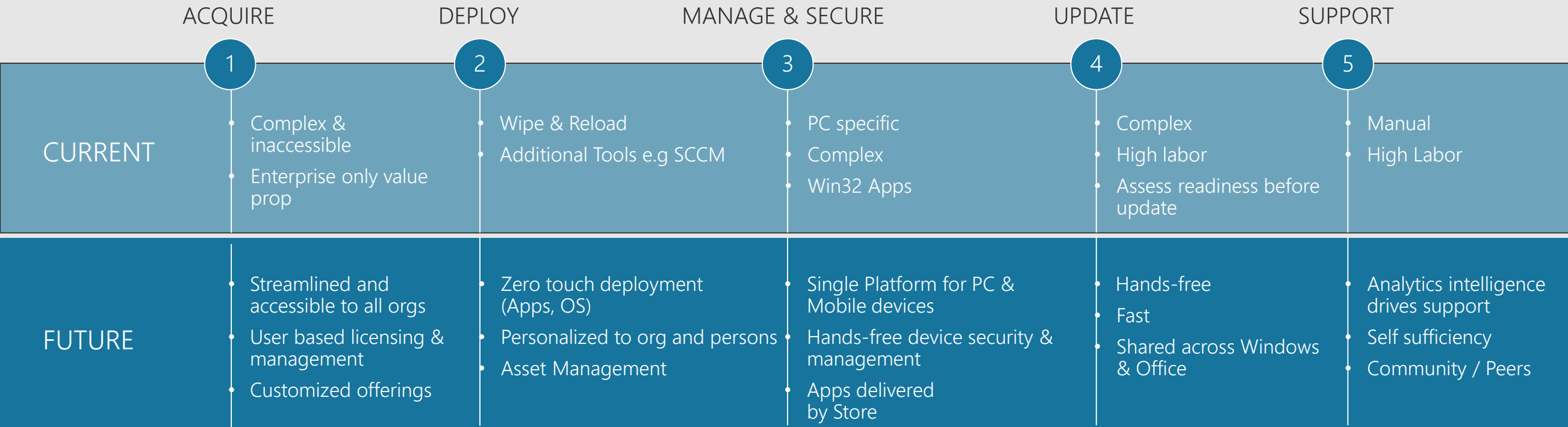
Autopilot Requirements (2/2)

- Azure AD P1 or P2
- MDM Service for Device Management
- Allow Users to Join Devices to AAD

So what does Autopilot actually do!?

- Skip Work or Home Usage Screen
- Skip OME Registration, OneDrive Cortana
- Skipping Privacy Screen/s
- Skipping EULA (1709)
- Possibility to prevent the enrolling account from getting Local Admin Privileges





Device lifecycle



Modern management infographic

Simplified management & security

Embrace cloud-based management and transition at your pace while staying in control.

-  Agentless
-  Unified identity, device and O365 ProPlus mgmt.
-  Office 365 ProPlus MGMT
-  Integrated data protection

Always up to date

Deliver the latest features and security.

Cloud updates mean you don't need to have on-premise update servers.

Control what updates are deployed, to whom and when.



Self-service deployment

Make any new PC enterprise-ready via a simple self-service experience.



Proactive insights

Get ongoing proactive insights to diagnose and fix issues before they happen.



Microsoft 365



Automatically configure devices when your users login with their company credentials.

Use cloud intelligence to upgrade Windows 10 and Office 365 ProPlus with confidence.

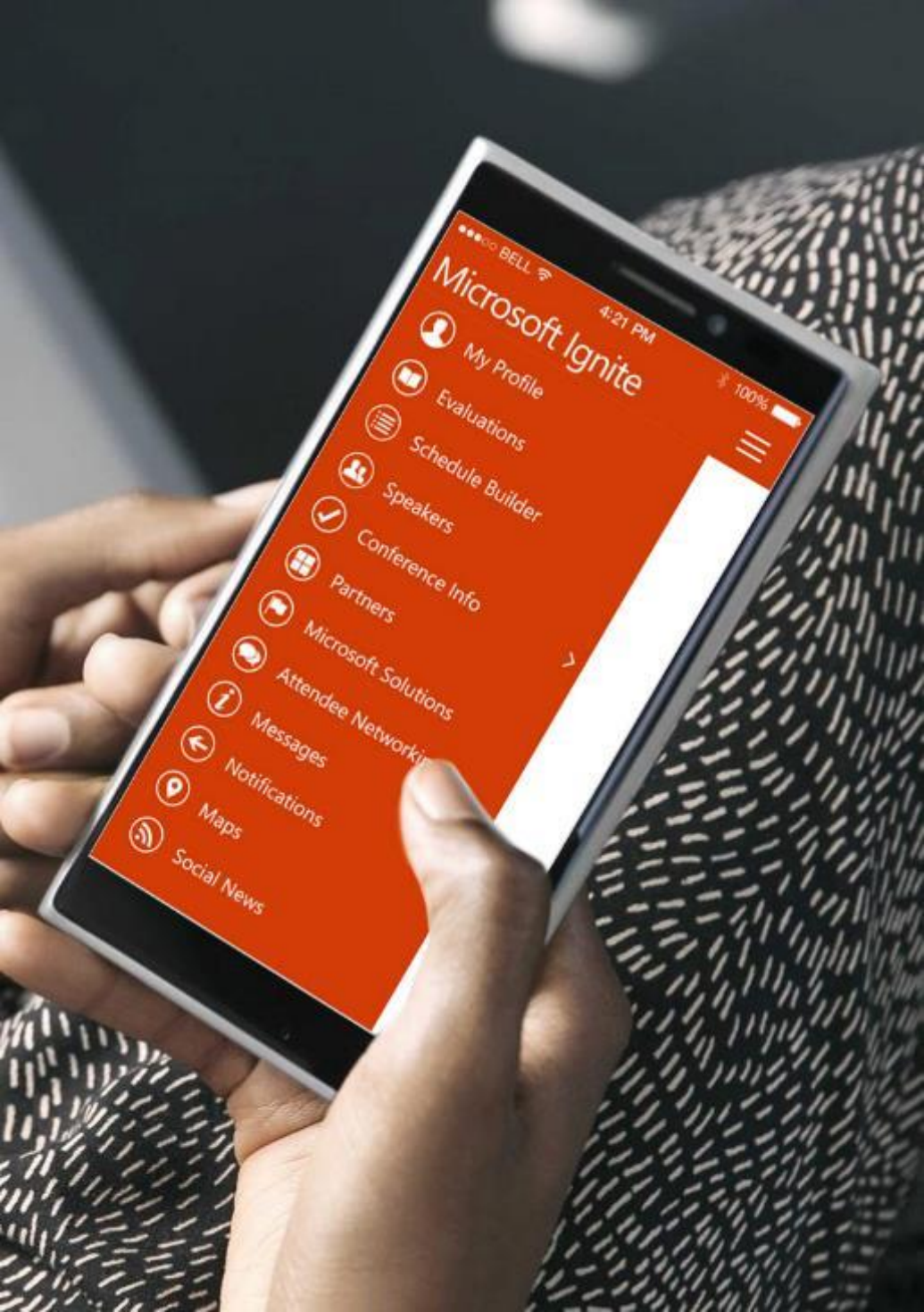
Sign in with contoso.microsoft.com



email@contoso.com

Next

Configure AAD + Intune

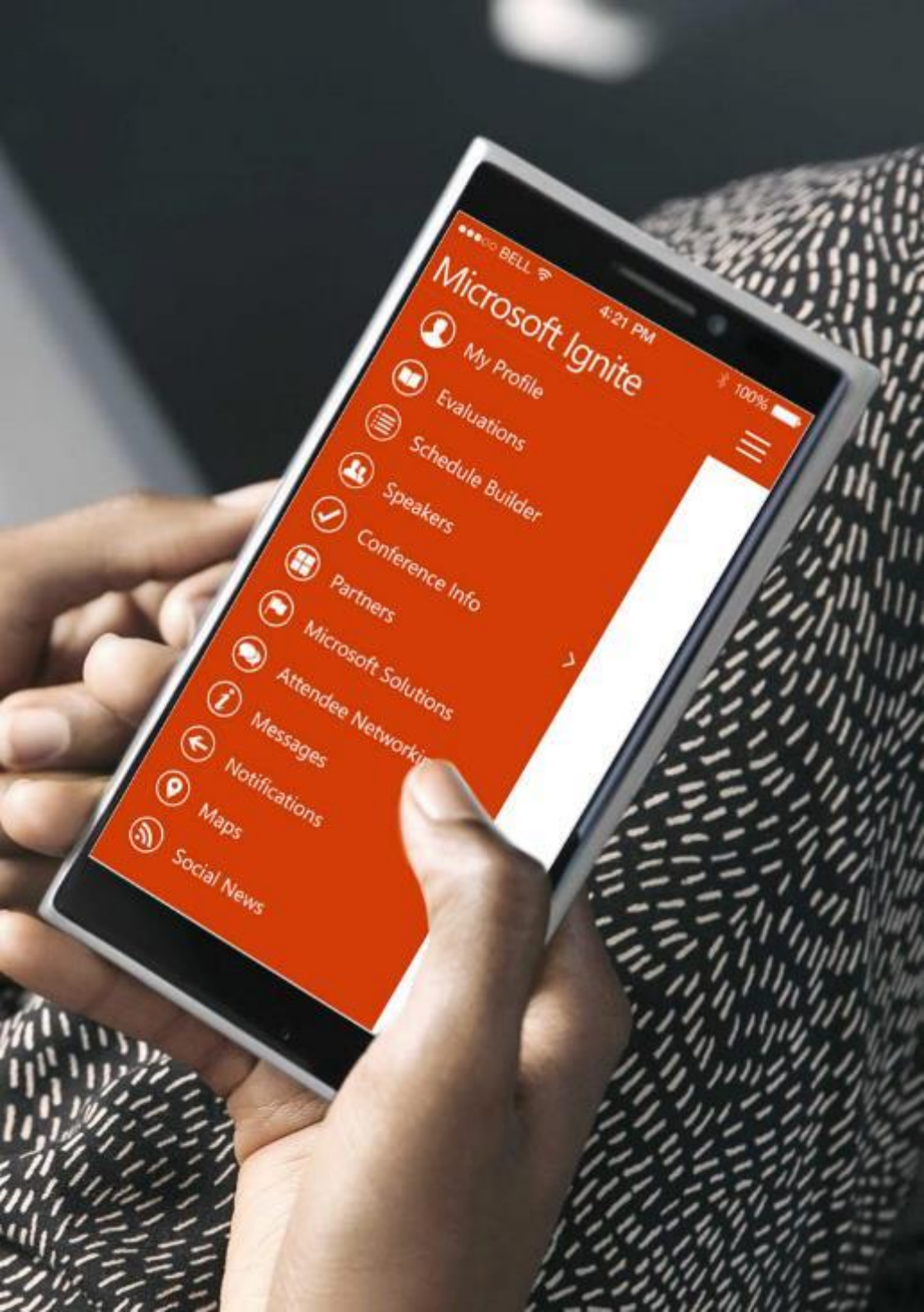


ClientID Report in ConfigMgr

1802

The screenshot shows the 'Windows AutoPilot Device Information' report in the Microsoft System Center Configuration Manager. The report is titled 'Windows AutoPilot Device Information' and is categorized under 'Hardware - General'. The report name is 'Windows AutoPilot Device Information' and the description is 'Displays client device information that is needed for Windows AutoPilot registration'. The report is displayed in a table format with the following columns: 'Enhetens serienummer', 'ID för Windows-produkt', and 'Maskinvaru-hash'. The table contains one row of data.

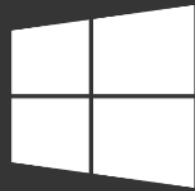
Enhetens serienummer	ID för Windows-produkt	Maskinvaru-hash
5601-4559-0561-7391-1555-8139-59	00329-00000-00003-AA779	T0GqAwEHAHAAAAoADwCrPwAACgAPAKs/MCphIngCCQMCABAACQABAAIAAgAAAAABQAZAAIAAAAAAAAAAAgAAAAAAAAABAAEAawMAEQBHZW51aW5lSW50ZWwABAA0AEIudGVsKFpIENvcmlUoVE0pIGk3LTc1NjdVIENQVSBAlDMuNTBHSHoAAAAAAAAAAAAAYAEBAAAAAAAAAAAAAoA/wEHAB4AfFZp cnR1YWwgRGZayAgICB8TXNmdCAgICAlAB4AAAAAAAAAAVXURjBwAAAA WAE0AQgBVAFMAAAAjABAAAAAAAAAAEAAp/////GwAIAAAAAAAAAKAAKAAw EAAAAAFYAVFBNLVZlcnNpb246M4wIC1MZlZlbnDowLVjldmlzaW9uOjEu MTUtVmVuZG9ySUQ6J01TRlQnLUZpcml3YXJlOjUzODI0NzQ0My4xMzk0Nz IyABkABAH31xsW +ZI/rdyEIA00LifGlnqDT c2dcXgaYRKCDLAgzF5sXw7Wh8SNK35wLgJBhHUH VeAv8F/BHyIutveFEQw75Ngo2epa8V9IUL+yp0l/c3+3K +7JolnRo4ep6p/vfdHUjoC1P6V4rGFu2X3l6VdfA3T2o6G +UwrPYaHhIPBG/Wfm9P9XWhNGnMrwchMFR4HM/q/BMOzic3GJWNyQ9J7 mDhuSX4SLY0CGDyepD7w@CQJFEeFEuQo/48eDy



Getting IDs and Configuring Autopilot

 Microsoft Surface Book





Continue in English?

English

Français

Español

中文繁体

中文简体

Next



Let's start with region. Is this right?

United Arab Emirates

United Kingdom

United States

Uruguay

Uzbekistan

Vanuatu

Vatican City

Venezuela

Yes



Listening...



Is this the right keyboard layout?

Swedish

Norwegian

Danish

United States-International QWERTY

Albanian QWERTZ

Azerbaijani PUSUDB

Azeri Latin QUERTY

Belgian (comma) AZERTY

Yes

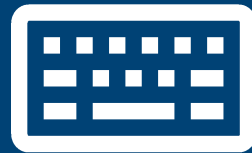


Listening...





Want to add a second keyboard layout?



Add layout

Skip







Listening...





Let's connect you to a network

-  Eduroam
Secured
 Connect automatically
[Connect](#)
-  SLUTA KLAMPA I GOLVET
Secured
-  HHonors
Secured
-  Network4
Open

Skip for now



Listening...





Enter your password



Eduroam
Secured

Enter the network security key

You can also connect by pushing the on the router.

Next

Cancel



SLUTA KLAMPA I GOLVET
Secured

Skip for now



Listening...





Enter your password



Eduroam
Secured

Enter the network security key

You can also connect by pushing the on the router.

Next



Cancel



SLUTA KLAMPA I GOLVET
Secured

Skip for now



Listening...





Great, you're connected!



Eduroam
Connected, secured

[Properties](#)

Disconnect



SLUTA KLAMPA I GOLVET
Secured



HHonors
Secured



Network4
Open

Skip for now



Listening...





Sign in with sunet.se

This device is registered to sunet.se. Enter your sunet.se email address



[Change account](#)

[Next](#)



Listening...



We're getting everything ready for you.

Don't turn off your PC



Setting up your device for work



Security setup complete



Network setup complete

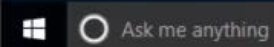


Application installation complete

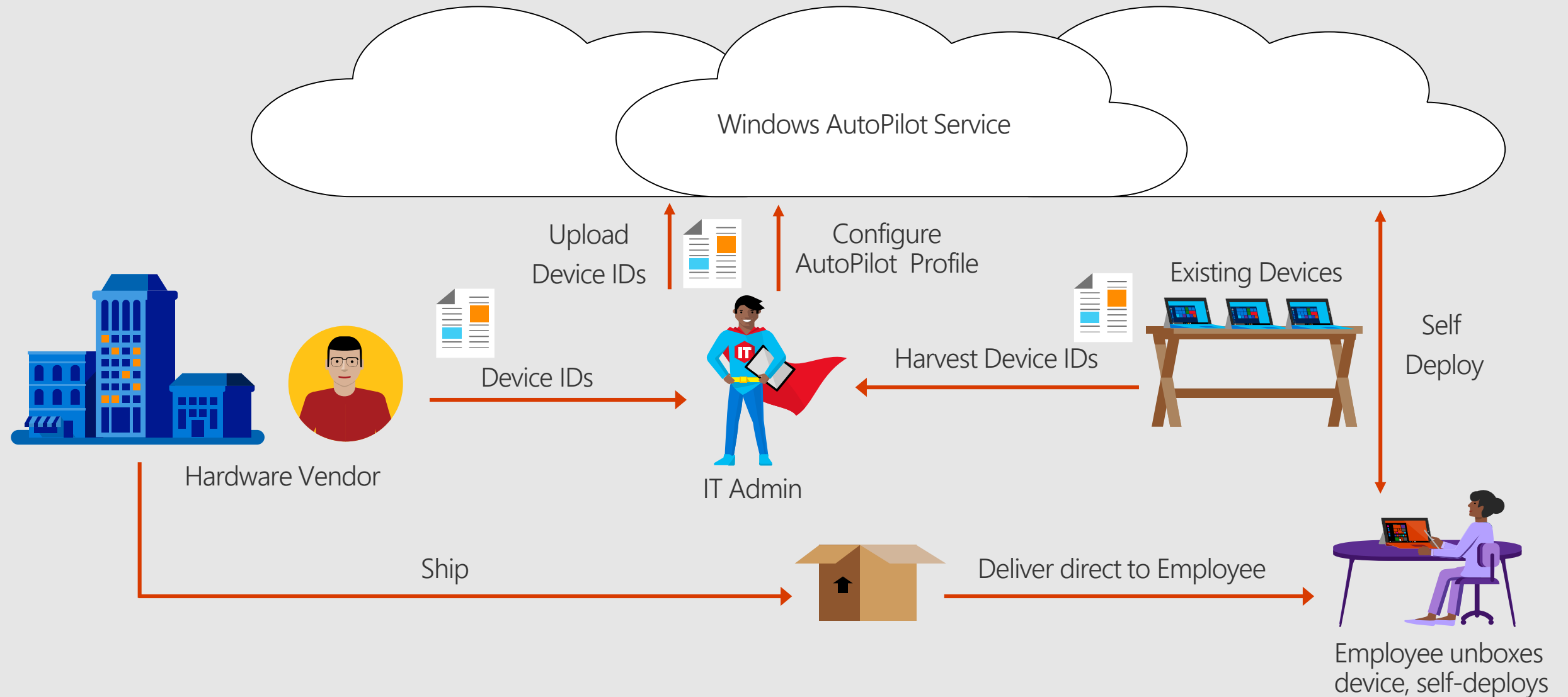
Leave everything to us. (Don't turn off this device.)



Recycle Bin



Windows autopilot in detail



Supported vendors to date

Lenovo



<https://blog.dell.com/en-us/the-new-management-paradigm/>

Supported vendors to date

Lenovo



Panasonic




FUJITSU


TOSHIBA

- New
- Dashboard
- Intune
- Azure Active Directory
- All resources
- Resource groups
- App Services
- Function Apps
- SQL databases
- Azure Cosmos DB
- Virtual machines
- Load balancers
- Storage accounts
- Monitor
- Virtual networks
- Advisor
- Security Center
- Billing
- Help + support
- More services >


Dashboard + New dashboard ✎ Edit dashboard 🔗 Share 🖥 Fullscreen 📄 Clone 🗑 Delete




Security Center




Microsoft Intune



Conditional access



Software updates




Mobile apps

Eastern Time (U... [Edit](#))

1:38 PM


FRIDAY, SEPTEMBER 22, 2017



Marketplace


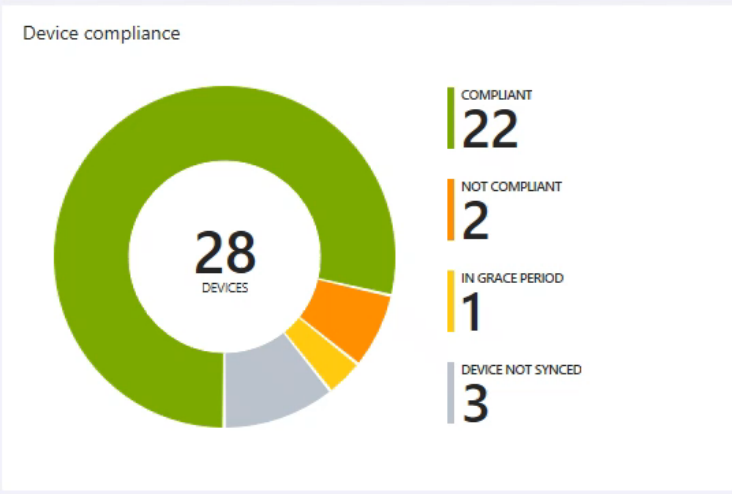
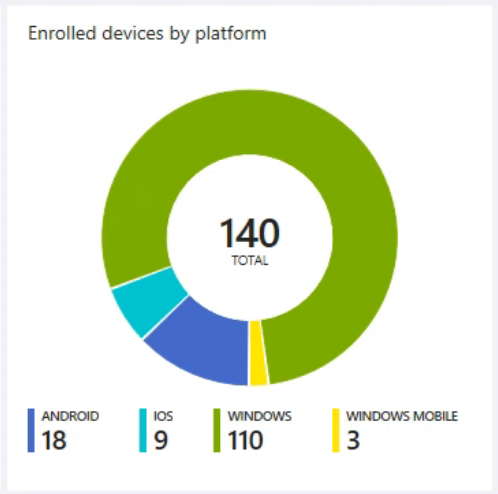


Directory - Ignite 2017

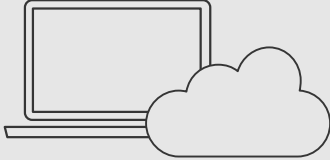
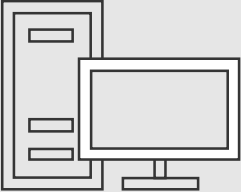


Azure AD Identity Protection

Users and groups

Traditional vs. modern it – tools



Traditional **and** modern it – tools

